



Date	Who	Detail, Timing and Venue
<b>Thursday 17<sup>th</sup> October</b>	Whole School	Flu Vaccines
<b>Tues 19<sup>th</sup> Nov</b>	Griffins and Phoenix	School trip to Bristol Synagogue
<b>Wed 27<sup>th</sup> Nov</b>	Dragons and Elves	School Trip to Wells Cathedral
<b>Friday 13<sup>th</sup> December</b>	Whole School	Trip to Weston Playhouse to see the Pantomime

**Friday collective worship assemblies** – For our reception class and new families we thought it would be useful to clarify what happens with our Friday assemblies. Each week we invite the parents of one class to join us at 9am for celebration worship and this finishes by 9.30. You may see your child go up to get a certificate, but we give certificates to children in all classes every week and we cannot guarantee that your child will get a certificate the week of your class worship. Collective worship this Friday (11<sup>th</sup>) is for Elves parents/families.

### After School Clubs

Please see attached the list of after school clubs available next term. These need to be paid for on ParentPay and the consent box ticked, the space will then be allocated to your child.

### School Lunches

You can now access the last week of this half term's menu on ParentPay called week 8 menu. Some parents have ordered up to the 18<sup>th</sup> October but now need to do the last week of term.

### Traffic and Car Park

There is a high volume of children running around the staff & disabled car park after school pick up. Please can you ensure your child/children walk safely and exit the car park area as quickly as possible.

It has also been noted that some parents are still parking dangerously at drop off and pick up time, especially opposite the school gate and at the end of Church Road. Please can we again politely ask parents to park safely and legally when dropping off and collecting their children from school.

### Attendance

Nationally and regionally, school attendance needs to be improved. Our whole school attendance is currently 93.4% which is below the expected standard of 96%. As a school we are currently sitting in the amber traffic light section and need to work together to help raise school attendance standards. We are here to support you wherever possible so please reach out if you have any concerns about your child's attendance and would like further support or guidance.

### Useful Information

Further information can be found on our website: [www.lympshamcofeacademy.co.uk](http://www.lympshamcofeacademy.co.uk)

**Our values**  
**'Hope, Enjoyment, Aspiration, Respect, Thankful'**

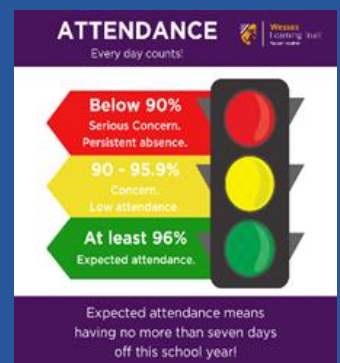
**Our Christian Value this term**  
**'Thankful'**

**Safeguarding**  
Safeguarding children is everyone's responsibility. If you are worried about a child, please email [office@lympshamcofeacademy.co.uk](mailto:office@lympshamcofeacademy.co.uk)

Designated Safeguarding Lead:  
Katie Whiting

**Reporting Absence**  
If your child is feeling unwell, please contact the school office on 01934 750473, or email using the school email address: - [office@lympshamcofeacademy.co.uk](mailto:office@lympshamcofeacademy.co.uk)

Lympsham CofE Academy  
Rectory Way, Lympsham  
Somerset, BS24 0EW  
**Main Office: 01934 750473**  
**Email:** [office@lympshamcofeacademy.co.uk](mailto:office@lympshamcofeacademy.co.uk)





# LYMPSHAM SCHOOL AGM

4PM SCHOOL HALL  
16TH OCTOBER 2024

Come join us to discuss the last 12 months  
and FOLS future fundraising events!

Everyone welcome!

#### Useful Information

Further information can be found on our website: [www.lympshamcofeacademy.co.uk](http://www.lympshamcofeacademy.co.uk)



Part of the  
**Wessex**  
Learning Trust